

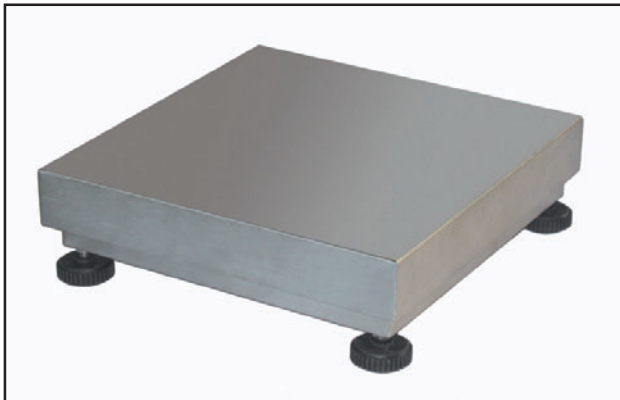


Novità - New

AIL-15 kg AIL-30 kg AIL-60 kg AIL-150 kg	dimens. 400 x 400 mm	Euro 615,00
AIL-75 kg AIL-200 kg AIL-300 kg	dimens. 600 x 600 mm	Euro 1000,00
Approvazione ATEX  II 1 G  II 2 D (zone 0-1-2-21-22) / ATEX approved (zone 0-1-2-21-22)		Euro 10,00
Colonna portaindicatori (Ø 38mm, h 700mm) in acciaio inox con staffa inox per fissaggio a piattaforma / Indicator stainless steel stand (Ø 38 mm, h 700 mm) for platform mounting		Euro 80,00

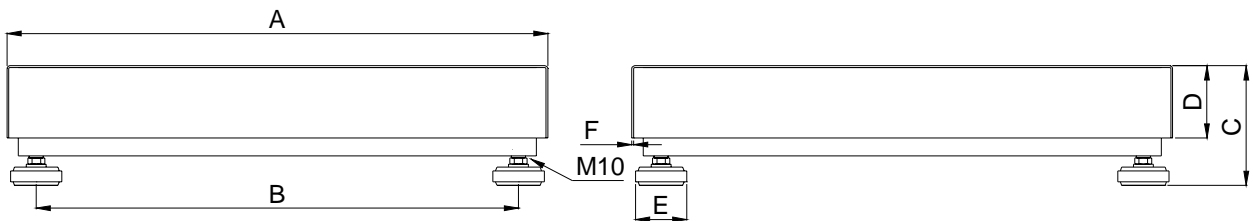
APPROVAZIONE  R60 C3



- STRUTTURA IN TUBOLARI IN ACCIAIO INOX AISI 304
- PIANO DI CARICO INOX AISI 304 APPOGGIATO
- CELLA DI CARICO IN ACCIAIO INOX SALDATA IP68
- PIEDINI IN ACCIAIO INOX E POLIAMMIDE

- AISI 304 STEEL TUBULAR STRUCTURE
- AISI 304 STEEL LOADING TOP (laid)
- IP68 WELDED STAINLESS STEEL LOAD CELL
- STAINLESS STEEL & POLYAMID FEET

Dimensions (mm)



	Celle di carico (Load Cells)	A	B	C	D	E	F	Peso
AIL kg 15, 30, 60, 150	30 - 50 - 100 - 200 kg	400	340	120	60	57	1,5	9 kg
AIL kg 75, 200, 300	100 - 300 - 500 kg	600	535	135	80	57	2	25 kg

PORTATA MAX MAX CAPACITY	DIVISIONE CE-M CE-M DIVISION
AIL kg 15	kg 0.005
AIL kg 30	kg 0.01
AIL kg 60	kg 0.02
AIL kg 75	kg 0.05
AIL kg 150	kg 0.05
AIL kg 200	kg 0.1
AIL kg 300	kg 0.1



* Dove previsto (where provided)